

Auditory-Verbal Center, Inc.  
**Annual Report 2015**



Dear Friends of the Auditory-Verbal Center, Inc.

We are proud to present to you the Auditory-Verbal Center, Inc (AVC) 2015 Annual Report.

The report presents the financial results for Fiscal Year 2015, a challenging year for charitable organizations as we entered this difficult economic period. We focused our efforts on our core mission to bring people who are deaf and hard of hearing into a lifetime of listening and speaking, serving children and adults, while building our capacity to ensure that AVC remains a sustainable organization.

In our ongoing effort to provide services to both children and adults, we increased the number of children receiving auditory-verbal therapy and increase our adult audiology caseload. Our auditory-verbal therapy growth includes our successful Macon satellite facility where we provide therapy to a population that previously lacked service. In order to serve those families who are unable to make the drive to one of our locations, we have successfully launched our tele-therapy program. This allows families to log on through the internet for live therapy sessions with their therapist. We are proud of our continued growth in these difficult economic times and our ability to provide high quality services to families regardless of their inability to pay.

In support of our continued growth, we have increased charitable contributions and maintained our limited State funding. We have strategically grown our board and seek to address business continuity going forward. We have also started a Junior board to fundraise and advocate through social media in an effort to reach out to the younger generation.

As always, we need more volunteers and active board members. As you review this report and our continued success, you may want to become involved. We would greatly appreciate your time and financial support.

On behalf of the entire AVC staff and board members, we thank you for your support. Your support and positive commitments are the fuel that keeps us moving forward to make AVC a sustainable organization.

Best regards,

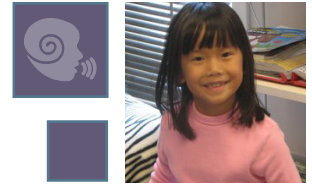


**Michael P. Sarsfield**  
Chairman of the Board



**Deborah A. Brillig**  
Executive Director / CEO

# OUR FOUNDATION



## VISION

To bring people who are deaf or hard of hearing into a lifetime of listening and speaking.

## MISSION

The Auditory-Verbal Center, Inc. is a premier provider of comprehensive Auditory-Verbal and Audiological Services to infants, children, adults, and their families. Through the auditory verbal approach, we teach children with mild hearing loss to profound deafness to listen and speak WITHOUT the use of sign language or lip reading.

## HISTORY

The Auditory-Verbal Center (AVC) was founded in 1977 in a small room above a church in Atlanta, GA. Since its humble beginnings, AVC has grown allowing us to open three locations—Atlanta, Macon and the Teletherapy.

AVC is a nonprofit organization 501(c)(3), that offers truly unique services, making it one of only a few such centers in the United States offering comprehensive Auditory-Verbal therapy and a full-service Audiology & Hearing Aid Clinic.

Our highly-trained specialists can offer service, consultation or referrals on a vast variety of issues concerning auditory-verbal therapy, cochlear implants, hearing aids and a host of other hearing impaired resources for the deaf or hard of hearing.

For over 35 years we have provided a family-centered and holistic approach to supporting and improving the lives of persons who are deaf or hard of hearing.

# LOCATIONS



## ATLANTA

*Auditory-Verbal Program and Audiology & Hearing Aid Clinic*

1901 Century Boulevard NE  
Suite 20  
Atlanta, Georgia 30345

Office: (404) 633 - 8911  
Fax: (404) 633 - 6403



## MACON

*Auditory-Verbal Program*

Executive Park North  
2720 Sheraton Drive  
Suite D-140  
Macon, Georgia 31204

Office: (478) 741 - 0019  
Fax: (478) 742 - 1308



## TELETHERAPY

*Auditory-Verbal Therapy conducted through a webcam at a local TeleHealth Center or an approved venue.*

**WEBSITE:** [www.avchears.org](http://www.avchears.org)

**EMAIL:** [listen@avchears.org](mailto:listen@avchears.org)

# LEADERSHIP AND STAFF



## STAFF

### Administrative Staff

Executive Director / CEO

Operations Manager

Insurance Coordinator

Marketing Coordinator

Development Coordinator

Insurance Assistant

Office Clerk

Deborah Brillling

Delphine Spann

Pattie Rivituso

Samantha Downton

Jonathan Brillling

David Struebing

Meyly Brizuela

### Auditory-Verbal Therapy Department

Clinical Supervisor  
Auditory-Verbal Therapist

Auditory-Verbal Therapist

Auditory-Verbal Therapist

Auditory-Verbal Therapist

Auditory-Verbal Therapist

Auditory-Verbal Therapist

Toy Room Coordinator - Atlanta

Toy Room Coordinator - Macom

Alison Tucker, M.Ed., CCC-SLP, LSLC Cert. AVT®

Aneesha Fairly, Ph.D., CCC-SLP, LSLC Cert. AVT®

Lauren Seale, M.Ed., CCC-SLP

Sarah Radlinski, M.S., CCC-SLP

Jonathan Jolivette, M.S., CCC-SLP

Sarah Vanselous, M.S., PCE-SLP

Astrida Greco, M.A., LSLC Cert. AVT®

Denise Harrow

### Audiology Department

Audiologist

Audiology Assistant

Jodi Seligman, Au.D., F-AAA

Susie Gouldson

# LEADERSHIP AND STAFF



## BOARD OF DIRECTORS

*The Board of Directors is legally and morally responsible for all activities of the agency. The Board is solely responsible for determining agency policy, approving the annual budget, and determining the goals of the agency.*

Chairman	Michael Sarsfield, Socata Aircraft
Secretary	Andre Reese, Cox Enterprises, Inc.
Treasurer	Bill Morris, Rozar Morris, LLC CPA
Member	Beth Mahaffey, AVC Co-Founder
Member	Deborah Brillling, AVC Executive Director / CEO
Member	Murray Pascual, Pricewaterhouse Coopers, LLP
Member	Omar Kinnebrew, RR Donnelley
Member	Roger Green, Green Financial Resources, LLC
Member	Dr. Paula Harmon, Pediatric Ear Nose & Throat of Atlanta

## BOARD OF YOUNG PROFESSIONALS

*The Board of Young Professionals consists of young adults who help advocate for the Auditory-Verbal Center by planning and executing various fundraising events and volunteer projects throughout the year.*

Chairman	Samantha Downton
Co-Chairman	Caleb Tucker
Member	Alexa Balsamides
Member	Jonathan Brillling
Member	Zoe Daole
Member	Ansley Dickinson
Member	Morgan Flannagan
Member	Christopher Tucker

# SUCCESS STORIES



*100% of AVC's child clients, 3 years of age and older, can attend regular school with their hearing peers. This is not common practice in deaf education and allows these children to develop and mature with their social peers. It also represents an enormous savings in taxpayer dollars.*



## KELLI

Born profoundly deaf and wears bilateral Cochlear Implants. She fulfilled her dream to be a Fireman. Won Top Rung award and was placed in the busiest firehouse in Clayton County, Station #4.



## ANNA BLAIR

Diagnosed at 15 months with a profound hearing loss and wears bilateral Cochlear Implants. She is now in high school taking AP classes and loves dancing Ballet.



## JONATHAN

Born profoundly deaf and received a Cochlear Implant at age 5. A graduate of Riverside Military Academy and was a Senior Airman in Civil Air Patrol. Now, he is a student at Gwinnett Technical College.



## SAMANTHA

Born profoundly deaf and wears a Cochlear Implant and a Hearing Aid. She is a graduate of the Art Institute of Atlanta with a degree in Graphic Design. She is actively involved with Kiwanis International as the GA District PR Coordinator and works at the Auditory-Verbal Center as the Marketing Coordinator.

# STATEMENT OF ACTIVITIES



**Auditory-Verbal Center, Inc.**  
**Statement of Activities**  
**For the year ended December 31, 2015**

	<i>Unrestricted</i>	<i>Temporarily Restricted</i>	<i>Totals</i>
<b>Public support and revenue</b>			
Public support:			
Contributions:			
Individuals - general	\$ 60,046	\$ 60,200	\$ 120,246
Civic / community	20,491	-	20,491
Corporations and foundations	50,056	100,000	150,056
United Way	-	30,000	30,000
Fundraising	59,827	-	59,827
Less direct fundraising costs	(30,014)	-	(30,014)
Services provided to:			
State of Georgia	155,670	-	155,670
County government grants	74,000	-	74,000
Net assets released from restriction:			
Timing restrictions	31,367	(31,367)	-
Satisfaction of purpose restrictions	125,200	(125,200)	-
<b>Total public support</b>	<b>546,643</b>	<b>33,633</b>	<b>580,276</b>
Revenue:			
Sale of program items	163,313	-	163,313
Cost of goods sold	(88,469)	-	(88,469)
<b>Net revenue from sales</b>	<b>74,844</b>	<b>-</b>	<b>74,844</b>
Audiological fees	194,172	-	194,172
Auditory-verbal fees	1,075,140	-	1,075,140
Scholarships and financial assistance	(511,302)	-	(511,302)
Insurance and other discounts	(317,111)	-	(317,111)
Medicare fee reimbursement	(24,382)	-	(24,382)
<b>Net fees</b>	<b>416,517</b>	<b>-</b>	<b>416,517</b>
Other income	5,752	-	5,752
Interest and dividends earned	1,858	-	1,858
Unrealized loss on investments	(3,445)	-	(3,445)
<b>Total revenue</b>	<b>495,526</b>	<b>-</b>	<b>495,526</b>
<b>Total public support and revenue</b>	<b>1,042,169</b>	<b>33,633</b>	<b>1,075,802</b>
<b>Expenses</b>			
Program services:			
Audiological	275,633	-	275,633
Auditory-verbal child program	597,207	-	597,207
<b>Total program services</b>	<b>872,840</b>	<b>-</b>	<b>872,840</b>
Supporting services:			
Management	107,947	-	107,947
Fundraising	45,005	-	45,005
<b>Total supporting services</b>	<b>152,952</b>	<b>-</b>	<b>152,952</b>
<b>Total expenses</b>	<b>1,025,792</b>	<b>-</b>	<b>1,025,792</b>
<b>Change in net assets</b>	<b>16,377</b>	<b>33,633</b>	<b>50,010</b>
<b>Net assets, beginning of year</b>	<b>193,686</b>	<b>56,367</b>	<b>250,053</b>
<b>Net assets, end of year</b>	<b>\$ 210,063</b>	<b>\$ 90,000</b>	<b>\$ 300,063</b>

*See accompanying summary of significant accounting policies and notes to financial statements*



# STATEMENT OF FUNCTIONAL EXPENSES



**Auditory-Verbal Center, Inc.**  
**Statement of Functional Expenses**  
**For the Year Ended December 31, 2015**

	<i>Program Services</i>			<i>Supporting Services</i>			<i>Total All Services</i>
	<i>Audiology Program</i>	<i>Auditory - Verbal Child Program</i>	<i>Total</i>	<i>Management</i>	<i>Fund Raising</i>	<i>Total</i>	
Salaries	\$ 146,662	\$ 355,543	\$ 502,205	\$ 35,387	\$ 19,383	\$ 54,770	\$ 556,975
Employee benefits	12,594	19,728	32,322	5,667	3,419	9,086	41,408
Payroll taxes	11,232	27,072	38,304	2,687	1,477	4,164	42,468
<b>Total compensation and benefits</b>	<b>170,488</b>	<b>402,343</b>	<b>572,831</b>	<b>43,741</b>	<b>24,279</b>	<b>68,020</b>	<b>640,851</b>
Rent	17,139	91,575	108,714	17,388	-	17,388	126,102
Professional fees	42,798	19,993	62,791	13,636	6,374	20,010	82,801
Supplies and expenses	5,613	17,394	23,007	2,379	2,403	4,782	27,789
Telecommunications	2,217	9,883	12,100	2,449	1,183	3,632	15,732
Equipment rental and maint.	5,033	9,277	14,310	3,243	3,243	6,486	20,796
Insurance	3,102	9,489	12,591	3,301	753	4,054	16,645
Staff development	199	2,100	2,299	-	-	-	2,299
Marketing/advertising	1,618	1,582	3,200	307	2,128	2,435	5,635
Postage and delivery	3,079	2,985	6,064	1,012	852	1,864	7,928
Professional dues and licenses	972	3,547	4,519	450	419	869	5,388
Bankcard fees	2,264	1,145	3,409	888	1,150	2,038	5,447
Travel	1,115	4,109	5,224	922	467	1,389	6,613
Printing and reproduction	241	530	771	30	31	61	832
Interest	1,895	4,589	6,484	1,220	221	1,441	7,925
Other expenses	186	2,346	2,532	13,928	-	13,928	16,460
Loss on disposition of equipment	-	229	229	680	-	680	909
<b>Total expenses before depreciation and amort.</b>	<b>257,959</b>	<b>583,116</b>	<b>841,075</b>	<b>105,574</b>	<b>43,503</b>	<b>149,077</b>	<b>990,152</b>
Depreciation and amortization	17,674	14,091	31,765	2,373	1,502	3,875	35,640
<b>Total expenses</b>	<b>\$ 275,633</b>	<b>\$ 597,207</b>	<b>\$ 872,840</b>	<b>\$ 107,947</b>	<b>\$ 45,005</b>	<b>\$ 152,952</b>	<b>\$ 1,025,792</b>

*See accompanying summary of significant accounting policies and notes to financial statements*

# STATEMENT OF CASH FLOWS

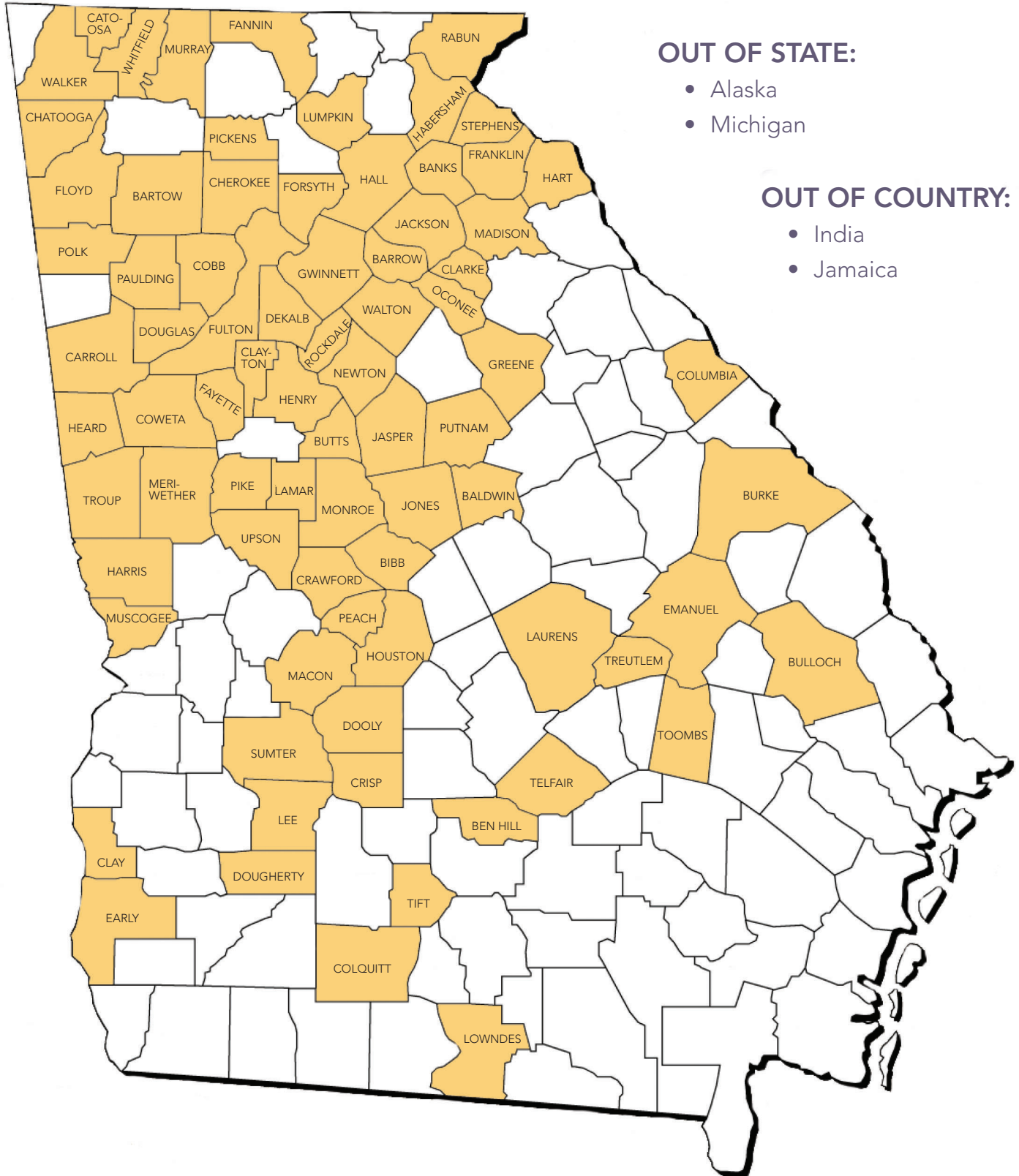


**Auditory-Verbal Center, Inc.**  
**Statement of Cash Flows**  
**For the year ended December 31, 2015**

<b>Operating activities</b>	
Change in net assets	\$ 50,010
Adjustments to reconcile change in net assets to net cash provided by operating activities:	
Depreciation and amortization	35,640
Loss on disposition of equipment	909
Unrealized loss on investments	3,445
Decrease in accounts receivable	1,175
Decrease in promises to give	1,367
Increase in prepaid expenses	(6,582)
Increase in accounts payable and accrued expenses	39,423
Decrease in deferred rent	(3,282)
Cash provided by operating activities	<u>122,105</u>
<b>Investing activities</b>	
Purchase of investments	(51,980)
Purchase of furniture and equipment	(3,180)
Cash used by investing activities	<u>(55,160)</u>
<b>Financing activities</b>	
Increase in bank line of credit	6,728
Payments on capitalized leases	(7,267)
Cash used by financing activities	<u>(539)</u>
<b>Increase in cash and cash equivalents</b>	<b>66,406</b>
<b>Cash and cash equivalents, beginning of year</b>	<u>118,665</u>
<b>Cash and cash equivalents, end of year</b>	<u><u>\$ 185,071</u></u>
Supplemental information:	
Interest paid	<u>\$ 7,925</u>

*See accompanying summary of significant accounting policies and notes to financial statements*

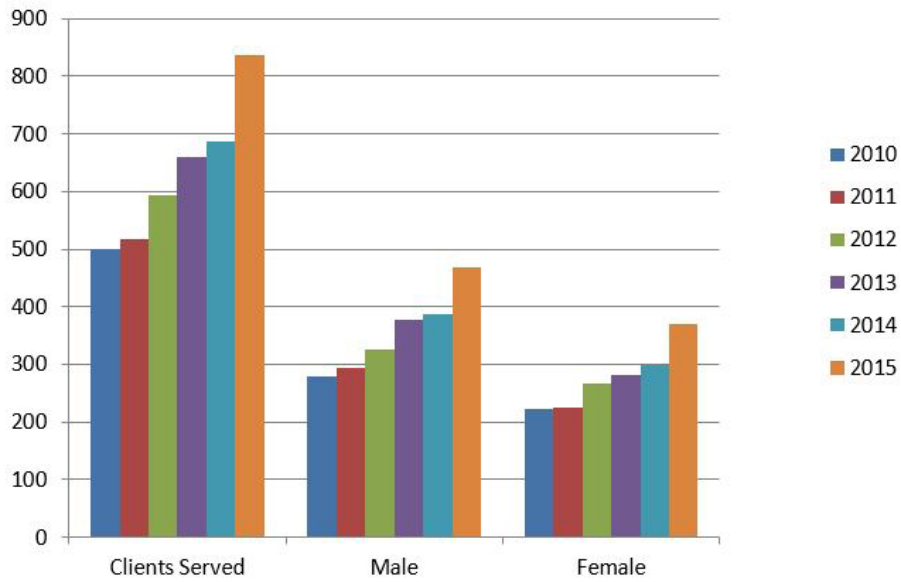
# COUNTIES SERVED IN THE AVT PROGRAM



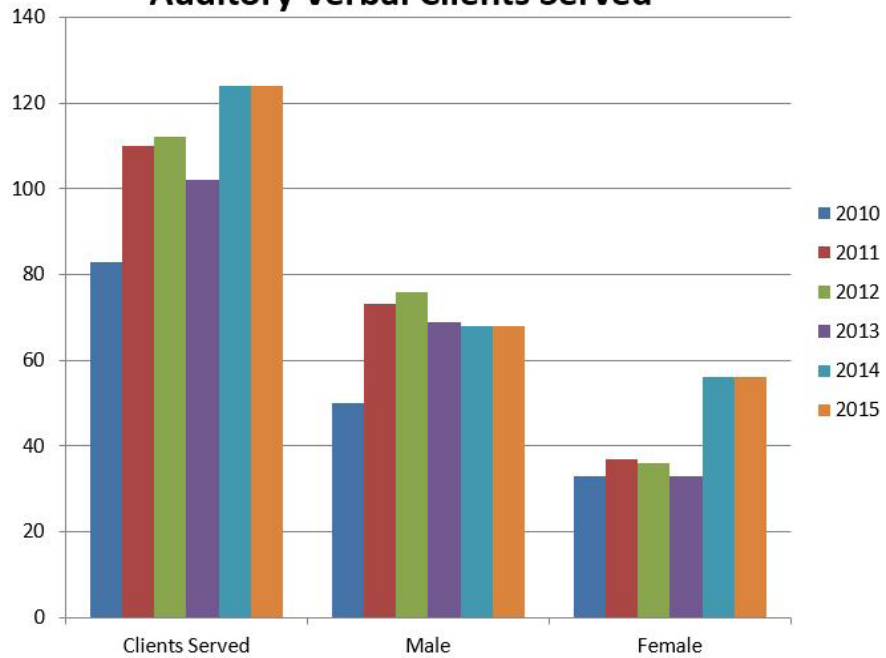
# CLIENTS SERVED IN 2015



## Audiology Clients Served



## Auditory Verbal Clients Served



# 2015 GIFTS



## **\$5,000 and Over:**

Mahaffey, Rich & Beth  
James M. Cox Foundation  
R. Howard Dobbs, Jr. Foundation  
Rivituso, Patricia J.  
Sara Giles Moore Foundation  
Green Financial Resources, LLC  
Georgia Dist. of Kiwanis, Inc.  
United Way of Metropolitan Atlanta  
James Starr Moore Memorial Foundation  
John & Mary Franklin Foundation, Inc.  
Lee Foundation

## **\$2,500 - \$4,999:**

Sarsfield, Michael P.  
Truist  
McMaster-Carr Supply Company  
Advanced Bionics

## **\$1,000 - \$2,499:**

Crews, Margaret A.  
Kajima Foundation, Inc.  
Kinnebrew, Omar  
Harmon, Paula  
Pediatric Ear, Nose & Throat of Atlanta  
Silliman, Ben L.  
Speedway Children's Charities  
The Generosity Trust  
GE United Way Campaign  
PMC Building Materials  
Gwinnett Hospital System, Inc.  
Crofton, John D or Cecelia  
Mayer, Robert D. & Elaine L.  
Ewing, Steven R. & Teri  
GE Foundation  
James W. & June E. Webb Charitable Fund  
Peach, Walter E.  
Zuckerman, Daniel F.

## **\$500 - \$999:**

SunTrust One Pledge Campaign  
Mahaffey, H. Randy  
Reese, Andre B.

Yankee Candle  
Clarke, Bertha  
Dougherty, Dianne  
Levi, Tammy  
JP Morgan Chase & Co.  
Salo, Eric V.  
CFC  
Give With Liberty  
Druid Hills Kiwanis Club  
Goodman, Dale & Paula  
Coombs, Michael  
Eisenberg, Stan DDS  
Lawson, Santiago L.  
Abroms, David  
Clarke, III James  
Hagan, James W. & Stacie S.  
Hofius, William James  
Oxendine IV, Calvin F.  
Platt, James C.  
Pricewaterhouse Cooper  
Production Builder Services, Inc.  
Rivituso, Patricia J.  
Taylor, J. Martin & M. Melinda  
Voya Foundation

## **\$100 - \$499:**

O'Neill Jr., Robert E. & Beth  
Flannagan, Tim  
Crane, William B.  
Tucker, Caleb  
Norfolk Southern Corporation  
Wilson, Robert & Lynda  
Hawkins Parnell Thackston Young  
Isburgh, Sarah & Andy  
Downton, Michele  
Menefee, Frederick & Helen  
Norman, Mike or Donna  
Rothkopf Greenberg Family Foundation  
Atlanta Plays Its Forward  
Sutherland, Mary C.  
Mercado, Lewis S.  
Smith, Jacqueline D.  
Ade, Melissa S. & Kyron  
Bhansali, Sanjay  
Franklin, B. Jason & Alia K.

# 2015 GIFTS



Heller, Marty I.  
Marsh, Claude E.  
Nyberg, Steve & Denise  
Sarsfield, Susan A.  
Thorpe, Chris  
Todd, Wendell & Jane  
AmazonSmile  
Brilling, Deborah Anne  
Felton, Stephen & Cassie  
Green, Paul  
Henleben, Cheryl J.  
Lamb, Becky & Martin  
Marsh, Austin  
Roberts, Steve & Lynda  
Rubin, Shay  
Simko, Stephen J. or Virginia T.  
Sporn, Elana  
Hunter, Hayden  
Balakrisharaja, Navin  
Radlinski, Sarah  
Downton, Samantha A.  
Ferguson, Frances  
Heavner, Krista  
Pascual, Murray  
Van Buren, James K.  
Chambers, Eugene P. (BO)  
Kroger Community Rewards  
Hipp, Cyndi  
Kinnebrew, Robert & Jennifer  
Cote, David & Christina  
Downton, Ryan  
Mastley, Dale F & Betty  
Morgan, Walter F.  
Prior, Harriet S.  
Pineros, Guerthy  
Brittingham, Dennis W.  
Abrams, Arthur A.  
Adams, Reid  
Anderson, Kenneth L. & Ann L.  
Ayers, Victor B. & Cheryl M.  
Bank of America Charitable Foundation  
Billingsley, Christopher & Mary C.  
Blanton, Tomie Jean Roberts  
Breault, Margaret  
Brown, George T.  
Campbell, Anthony  
Goudy, Steven

Hanrahan, Ruth N.  
Hutcherson, John K.  
Jackson, Blondell  
Kapgan, William  
Mahaffey, Matt  
Marsh, John E.  
Mitchell, Sarah H.  
Pilger, John J.  
Pursley, Michael G.  
Robertson, Michael W.  
Rogers, Jon Kirk  
Taylor, Greg & Lynne  
Tehan, Chelsea  
Titus, C. Barry  
Wellbeloved, James T. & Helen

## **\$99 and Below:**

Wilson, Mark  
Mealor, Marie S.  
Chen, Xenia M.  
Dickinson, Ansley  
Gibson, Carrol  
Gizzi, Amber  
Mayer, Bill  
Morris, William F.  
Batchelder, Joshua H.  
Collins, Victor  
Davis, Charles  
Tucker, Christopher  
Kennedy, James  
Franklin, Nate A.  
Abaries Farhad  
Blanton, Rebecca S.  
Couch, Kyle  
Delapeta, Darius  
Duncan, Clark  
Duncan, Toni A.  
Greco, Astrida  
Gregg, Lizzy  
Woods, Margaret Ann  
Lamb, Grayson  
Young, Stephen L. & Cordelia  
Gorman, Milton H.  
Corona, William  
Blanton, Benjamin R. & Jan S.  
Fainberg, Jolie C.

# 2015 GIFTS



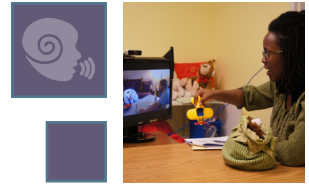
Holley, Col. John C. & Harriett  
Holt, James R. & Meredith J.  
Jackson, Elizabeth J.  
Jones, Ken & Kristine  
Just People Inc.  
King, Tiffany L.  
Marshall, David C.  
Munder, Gary  
Norton, A. Frank  
O'Donnell, David & Mary  
Richmond, Allan Gary & Abby Ilene  
Sandefur, Anita Y.  
Shepherd, Charles G.  
Soderberg, Thomas A.  
Tabb, Judy N.  
Vandegriend, Christine M.  
Verlander, Robert J.  
Winkler, Randall  
Zahorchak, Frances A.  
Capane, Maria L.  
Daole, Zoe  
Jennings, Giovanni A.  
Seligman, Jodi  
Bouchard, Kyle  
Carter, Lauren  
Herbert, Beverly G.  
Johnson, Clemont & Linda  
Jones, Krystel  
Conway, Tim  
Plaia, Ruby A.  
Feintuch, Nolan`  
Franklin, D. Sharone  
Hunt, M. D.  
AT&T United Way  
Adams, Jean B.  
BB&T  
Belmonte, Colleen  
Brown, Judi  
Little, Jeff P.  
Mann, Bonnie S.  
Morales, Amilcar E.  
Morgan, Jean L.  
Riley, Christopher & Deena M.  
Schweitzer, Richard  
Voelz, Gary L. & Patricia M.  
Wisdom, Carol Montgomery

Womack, Dan M. & Carol Ann  
Northlake Kiwanis Club  
Baldini, Reshell  
Brizuela, Deylyn  
Brizuela, Meyly  
Gravett, Jeannie  
Howland, Jason  
J. Shelia  
Kilgore, Chelsea  
Knox, Michael & Susan  
Landrewneal, Darryl  
Noeck, Michael  
Phillips, Terence  
Seale, Lauren  
Spann, Delphine L.  
Arvidson, Tim  
Ault, Ethyl L.  
Kleeman, Shannon  
Powell, Camille  
Rosenbaum, Stephen M.  
Smith, Mary Claire  
GoodSearch  
Adams, Shirley G.  
Bedinger III, Frank C.  
Ehiwe, Olivia  
Jones, Clara A.  
Kirkland, Jennifer  
Sorrentino, Robert C. & Tanja  
YourCause, Trustee for JCPenney  
Gehrmann, Jennifer L.  
McReynolds, James S.  
Barrett, Mary  
Black, Brigittee

## **Buck-n-Ear (Kiwanis):**

Airport Area Kiwanis Club  
Albany Golden K  
Albany Kiwanis Club  
Alpharetta-Johns Creek  
Americus Kiwanis Club  
Atlanta Kiwanis Club  
Baxley Kiwanis Club  
Blue Ridge Kiwanis Club  
Brooklet Kiwanis Club  
Calhoun Kiwanis Club

# 2015 GIFTS



Carrollton Golden K  
Carrollton Kiwanis Club  
Cartersville Kiwanis Club  
Cedartown Kiwanis Club  
Clarkesville Kiwanis Club  
Columbus Kiwanis Club  
Cordele Kiwanis Club  
Cornelia Kiwanis Club  
Covington Kiwanis Club  
Coweta County Kiwanis Club  
Crawford County Kiwanis Club  
Cumming Kiwanis Club  
Dalton Kiwanis Club  
Doraville Kiwanis Club  
Douglas County Kiwanis Club  
Duluth-Norcross Kiwanis Club  
Dunwoody Young Professionals Club  
East Cobb County Kiwanis Club  
Eastman-Dodge County Kiwanis Club  
Eatonton Kiwanis Club  
Fairfield Plantation Kiwanis Club  
Forest Park Kiwanis Club  
Forsyth-Monroe County Kiwanis Club  
Galleria NW Atlanta Kiwanis Club  
Golden K Columbus  
Greater Kennesaw Kiwanis Club  
Greater South Cobb Kiwanis Club  
Griffin Kiwanis Club  
Hartwell Kiwanis Club  
Historic Roswell Kiwanis Club  
Jesup Kiwanis Club  
Jones County Kiwanis Club  
Jonquil City Kiwanis Club  
Kennworth Golden K  
Kiwanis Club of Douglas  
Kiwanis Club of Gainesville  
Kiwanis Club of Savannah  
LaGrange Kiwanis Club  
Loganville Kiwanis Club  
Macon County Kiwanis Club  
Macon Kiwanis Club  
Manchester Kiwanis Club  
Marietta Golden K  
Marietta Kiwanis Club  
McIntosh Trail Kiwanis Club  
Metro Atlanta Kiwanis Club

Metro Fayette Kiwanis Club  
Metro Marietta Kiwanis Club  
Metter Kiwanis Club  
Milledgeville Kiwanis Club  
Monroe Kiwanis Club  
Moultrie Kiwanis Club  
Newnan Kiwanis Club  
North Gwinnett Kiwanis Club  
North Macon Kiwanis Club  
Northside Atlanta Kiwanis Club  
Peachtree Atlanta Kiwanis Club  
Perry Kiwanis Club  
Rockmart Kiwanis Club  
Rome Kiwanis Club  
Saint Marys Kiwanis Club  
Sandy Springs Kiwanis Club  
Smyrna Kiwanis Club  
Southlake Kiwanis Club  
Statesboro Kiwanis Club  
Thomaston Kiwanis Club  
Thomasville Kiwanis Club  
Thomson Kiwanis Club  
Tifton Kiwanis Club  
Turner County Kiwanis Club  
Valdosta Kiwanis Club  
Vidalia Kiwanis Club  
Villa Rica Kiwanis Club  
West End Atlanta Kiwanis Club  
Winder Kiwanis Club





# THANK YOU.

*Thank you for taking the time to review our 2015 Annual Report. Please contact us if you have any questions or would like to become involved in some way at the Auditory-Verbal Center.*

*We appreciate your support.*



**Auditory-Verbal Center**  
*Giving Sound & Voice to the Deaf or Hard of Hearing*  
[www.avchears.org](http://www.avchears.org)